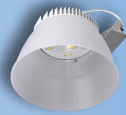


Good

Better

Best

Click on products to learn more



		LHB	VHB	RHB	ILED	Steeler	HBLED	OHB	XHB	Benchmark
APPLICABILITY ¹	Big Box Retail	★	★	★★★★	★★★★	★★	★	★★★★		★
	Sports / Recreation	★★	★★	★★	★	★★★★	★★	★★★★		★★
	Warehouses	★★★★	★★★★	★★	★★★★	★★★★	★★★★	★★★★		
	Manufacturing	★★	★★	★	★	★★★★	★★★★	★★★★	★★★★	★★★★
	Cold Storage	★	★★★★	★		★	★	★★★★		★★
	Large Indoor					★★	★★★★	★★★★	★★★★	★★
	Complex Environments		★			★			★★★★	★★★★
FEATURES / PERFORMANCE	Lumen Range	12,000 - 36,000	9,000 - 24,000	12,000 - 28,000	5,000 - 32,000	9,000 - 36,000	12,000 - 60,000	12,000 - 60,000	60,000 - 85,000	12,000 - 36,000
	Efficacy (Max)	140 lm/W	133 lm/W	148 lm/W	155 lm/W	152 lm/W	186 lm/W	207 lm/W	132 lm/W	181 lm/W
	CRI	80	80	80	80	80	70, 80	70, 80, 90	70, 80	70, 80
	Distribution	M	N, W	W	N, W	N, M, W	N, W	N, M, W	N, M, W, EW, UW	N, M, W
	Sizes	13" x 2' & 4'	< 2'	16" Dia	4', 8'	17" Dia	4'	Scalable	22" Dia	17" Dia
	Housing ²	CRS	CRS / Extruded	Diecast	CRS	CRS / Diecast	CRS	CRS	Diecast	Diecast
	Lensing	Acrylic	Polycarbonate	Reflector	Optional	Polycarbonate	Optional	Acrylic	Polycarbonate	Acrylic
	Uplight	None	None	Up to 10%	Up to 5%	Up to 10%	None	None	None	None
	Life (@ 60K hrs)	L84	L83	L94 @ 54K hrs	L86	L88	L84	L96	L87	L92
	Ambient Range	-40C to 40C	-40C to 40C	-40C to 50C	-40C to 35C	-40C to 55C	-40C to 55C	-40C to 55C	-40C to 65C	-40C to 65C
	Emergency	None	Remote	None	Integrated	Remote	Integrated	Integrated	Remote	Remote
	Ratings	Damp	Damp	Damp	Damp	IP65 Optics	Damp	Damp	IP66, NEMA 4X	IP66
	DLC	Premium	Standard	Premium	Premium	Premium	Premium	Premium	Premium	Premium
INTEGRATED CONTROLS	Basic Occupancy		✓		✓	✓	✓	✓		✓
	Stand Alone Daylight / Occupancy		✓		✓	✓	✓	✓		✓
	WaveLinx		✓					✓		✓
	LumaWatt Pro ³		✓			✓	✓	✓		✓

Notes: 1. ★★★★★ = high applicability, ★★ = medium applicability, ★ = low applicability, blank = non-applicable
 2. CRS=Cold-rolled Steel, Extruded=Extruded Aluminum, Diecast=Diecast Aluminum.
 3. Location data for asset tracking.